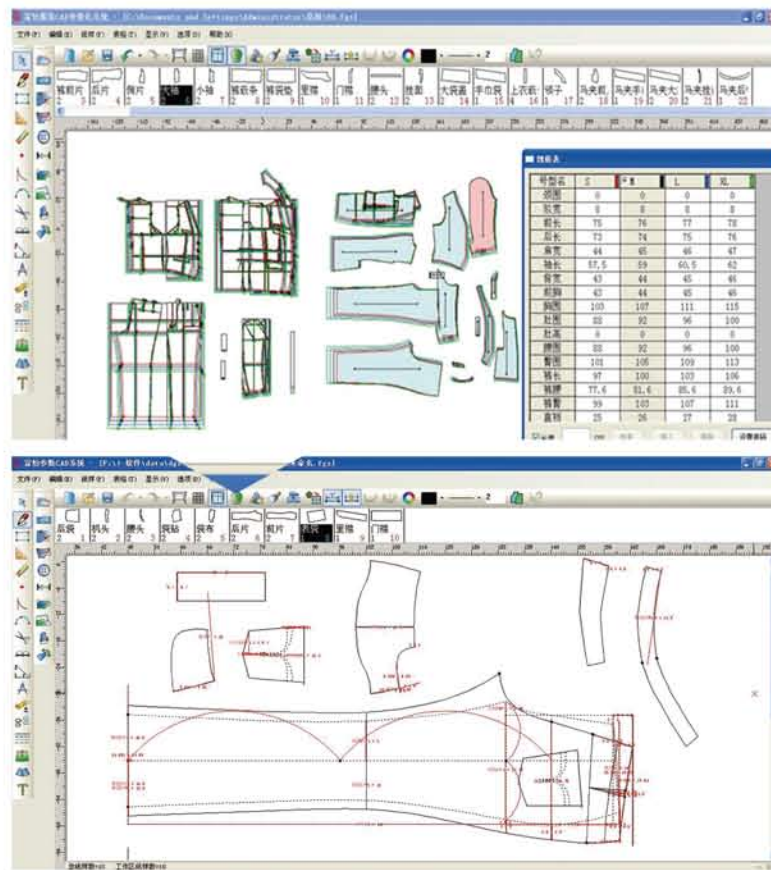


富怡参数CAD系统V9公式法隆重推出

Richpeace PDS CAD System - Grandly Launch in V9 with Formula Design feature

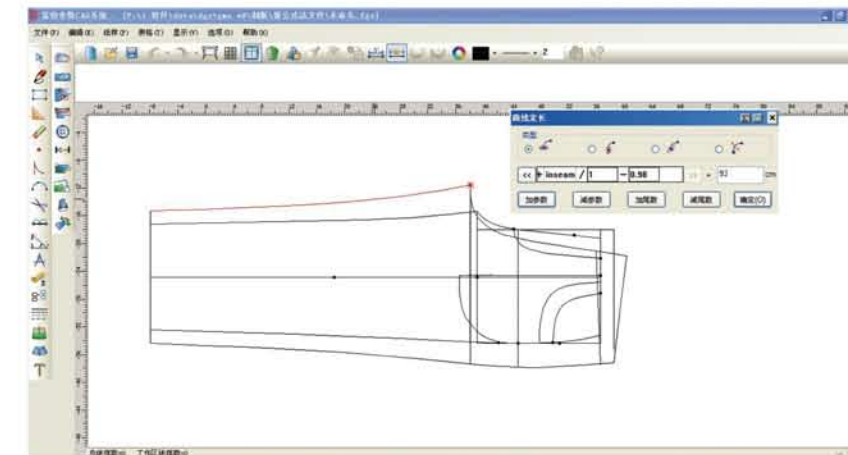
- 人性化的公式制图方式，实现了大量经典款的任意调用，保存、修改、大大的缩短了制版的时间，解决了版师，设计师的重复劳动，直接作出一个尺码，其他码会随之作出，既简单又快捷
Custom made formula design mode, capability for a huge library and size spec data on basic style instantly available. Allow to save and modify the existing library data, shorten the pattern work for designer. Completely solve the routine job on designer and pattern designer. Simply and fast to create new size after a basic size has been made.
- 先进的智能自动放码功能使放码时间缩短为零，结构线也可以放码，可边做边检查自动放码效果，便于及时修正，提高工作效率
With state-of-the-art and intelligent automatic grading function, grading time can be instantly occurred and construction lines can also be graded as well. The operator can be simultaneously checking the auto grading effect while doing the modification work. It makes effectively on doing the correction and greatly enhances the productivity.
- 强大的联动修改功能可以完成关联部位的同步修改，无须担心对应部位的尺寸偏差
Powerful parts associated modification function can change those associated parts simultaneously, without worrying about the variation of corresponding dimensions.
- 数字化记忆功能可以随时将任何部位的数据调出来进行修改，修改尺寸随心所欲
Digital record function can recall any part of dimension data and modify it at any time, changes can be done per the idea.



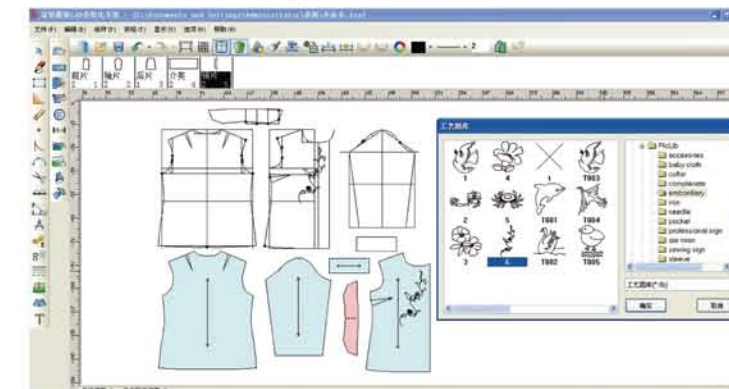
- 与EXCEL兼容, EXCEL里制作的尺寸表可以调入公式法打版界面
Compatible with Excel, specification edit in Excel can be imported to PDS system easily.



- 突破性功能：曲线长度也可用参数修改，例如夹圈尺寸，裤子内长，外长等等
Breakthrough Feature : Arc length parameter can be modified, such as armhole, pants inside seam and outside seam, etc.



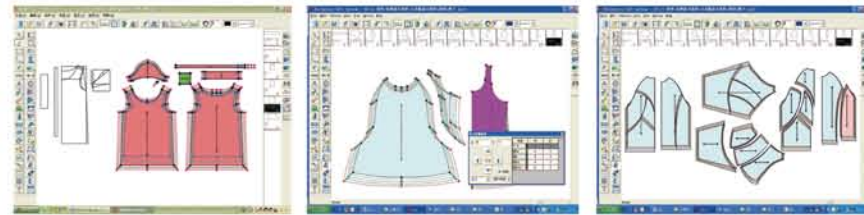
- 工艺图库也调入公式法打版界面
Data in pic lib can be loaded to PDS interface easily.



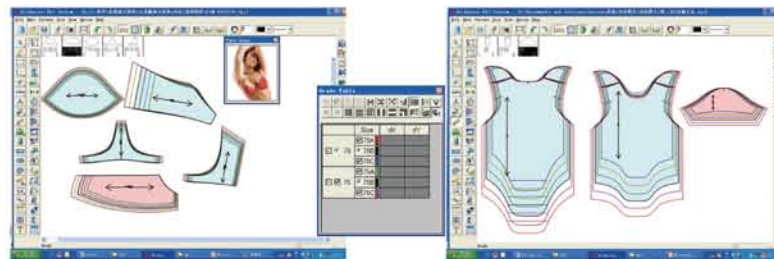
获取本页信息请扫
Get this page

放码模块 Grading System

- 根据不同的款式提供了不同的放码方式
Many grade rules suitable for various styles according to their requirement.
- 自动放码：纸样自动规则或不规则放码
Auto Grading: All the sizes will be auto graded regularly or irregularly after the Auto Design done.
- 强大的点放码功能：强大的复制、粘贴功能，不需要输入正负，系统自动判断
Powerful point grading: Powerful copy and paste function, no need to care about the Plus or Minus sign, system will automatically detect it.
- 辅助线、绗缝线、缝迹线自动放码，减少操作流程，提高工作效率
Assistant Line, Quilting Line, Sew Line Grading automatically. Reduce the operation process and improve working efficiency.
- 方向键放码：直接用键盘上的上、下、左、右键进行放码操作。非常好分辨大小码，不易大小码方向弄反，无需考虑正负，快速切换到下一放码点，放码进程加快了
Arrow key grading: Pressing the Up & Down, Left & Right keys to have the real-time grading results. Distinguish larger or smaller sizes easily. Won't mess up with the scaling of sizes. Don't worry about the plus and minus values. Jump to next grading point promptly.
- 定型及等幅高放码：对于某些弧度大的弧形，定型及等幅高放码可以避免形状变化
Shape and Height Grading: Deal with some pattern pieces containing larger curve or arc line, the Shape and Height Grading can be used in order to avoid shape change after grading.
- 整体放码：对于分割较多的样片可以先整体放码，然后依据基本码剪开
For style with many cutting and sewing pieces, use the Whole Grading then separate them base on the assistant line.

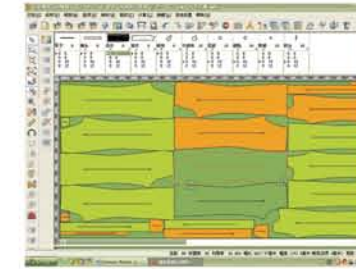


- 成组放码：一个号型的几个组可以同时放码，特别适用于内衣或者尺寸变化较大的童装
Group Group: A style with many group pieces can be using Group Grading. It is specially suitable for underwear or having many sizes variation children wear.

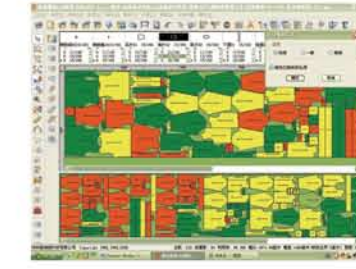


排料模块 Garment Marker System

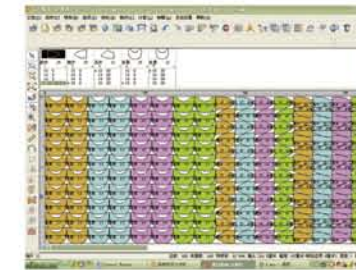
- 短时间内自动完成高利用率排料，双界面同时排料能使样片排列更紧凑，提高排料效率
Auto nesting: High utilization marker can be done in a very short time. Dual interface work at the same time, allow operator to make a very effective nesting, improve the fabric utilization.
- 手动排料，对样片进行灵活倾斜，微调以及借布边达到很好的利用率
Manual Nesting: Manually overlap the patterns pieces and fine tuning a little bit, plus fully utilize the fabric edges, can achieve better utilization.



- 系统为玩具，手套，内衣等量身定做制帽功能
Cap nesting: Tailor-made marker solution for toy, glove, cap, and underwear industries.



- 复制倒插唛架功能使排料达到很高的利用率
Duplicate and reverse nesting: Duplicate with reverse the markers can achieve a higher utilization.



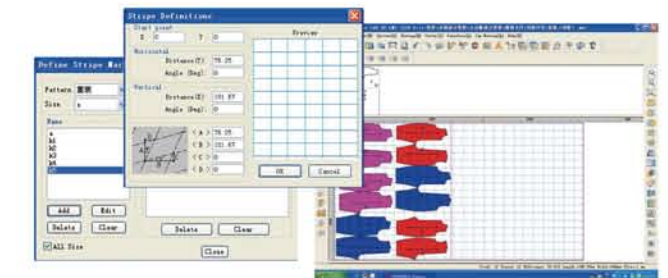
- 关联：放码里剪口或内部元素或尺寸更改后，能使排好的唛架自动更新，而不需要重新排料，节省大量时间
Associate: After adding notches on graded pieces, some internal modification or dimension changes taken place, it automatically update the completed marker, no need to make the marker again. It saves a lot of time.



- 条格面料排料：在排料过程中，为使面料最大程度利用，可以将扫描的面料调入系统
Strip and plaid material nesting: In order to achieve a higher utilization, during the nesting process, fabric image can be scanned in, to assist the operator to make a better marker.



唛架上显示面料 Show fabric pattern on marker



自定义条格 Define Stripe and Plaid parameters in system

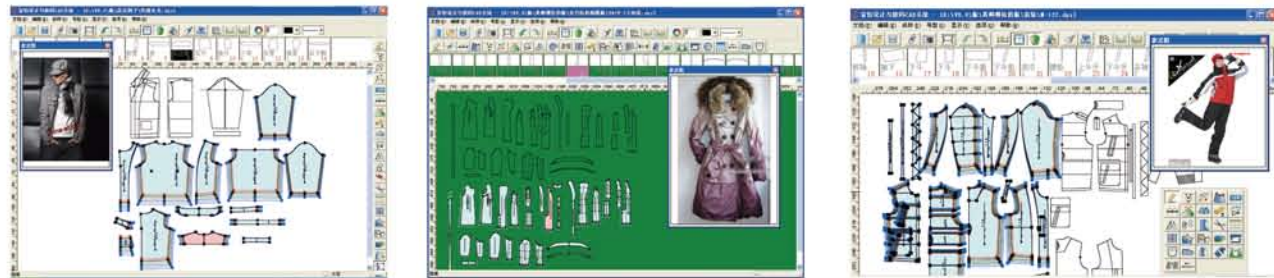


个性化服装CAD集大成者

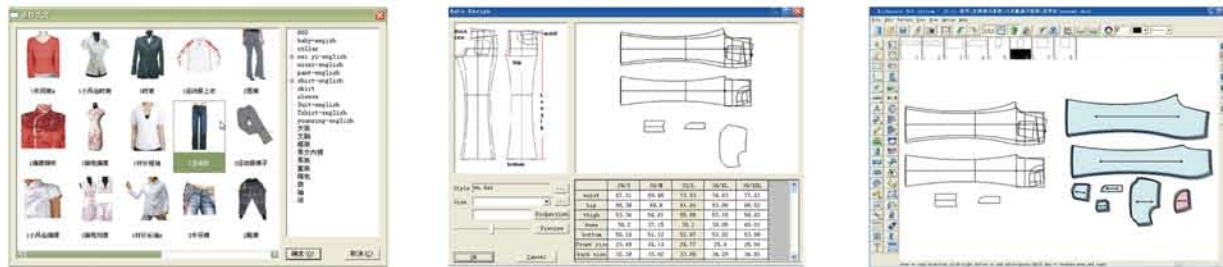
Personalized Garment CAD Software

打版模块 Pattern System

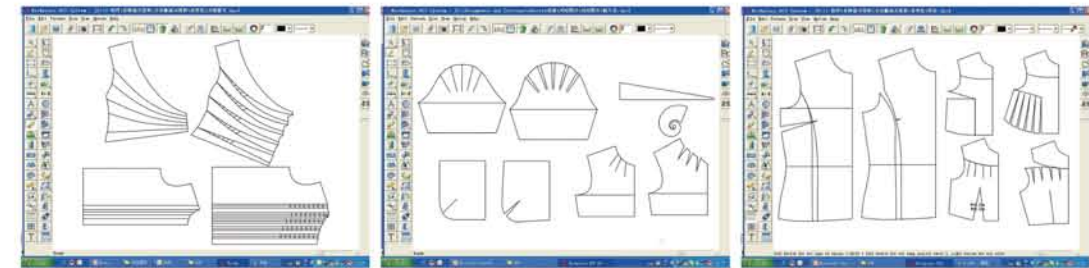
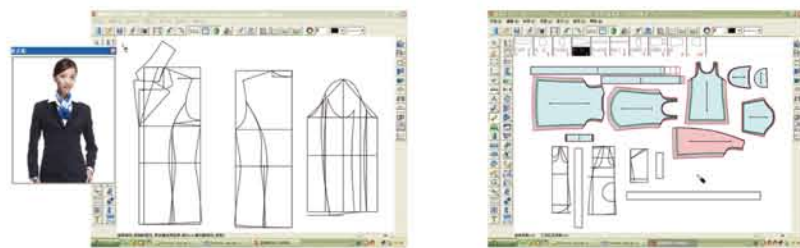
- 个性化界面及工具设计：版师可以根据自己公司服装风格选择合适的工具条及根据自己的喜好选择界面，包括男装，女装，童装，内衣，滑雪服等
Customerized Interface and User-defined toolbar can be set. Designer can set their own suitable working theme toolbar and define their own user interface. It can be Menswear, Womenswear, Children wear, underwear and Skiwear toolbar etc.



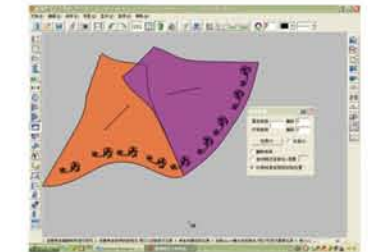
- 自动打版：系统里有丰富的版型素材库，设计者可以根据款式自动调出版型，联动修改，短时间内生成新的款式，提高工作效率
Auto Design: Rich style library in the system, designer can call up the required library at anytime, as well as editing the figures. Anyone can make a new style in a short time, it improves the working efficiency and easier for the complicated design work.



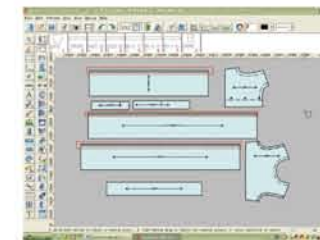
- 自由设计：版师可以根据自己的做版习惯，自由的设计版型
Free Design : Designer can freely draw the pattern pieces with their own habit.
- 强大的智能笔工具：一支笔可以完成20个功能，不用切换工具，短时间内完成制作
Powerful Intelligent Pen : Including more than 20 useful functions with this Intelligent Pen, no need to swap with other commands, able to complete a pattern draw shortly with this single command.
- 专业的省转移、刀褶、工字褶、荷叶边工具，短时间内完成省褶处理
Professional Dart Transfer, box and knife pleat, flouncy tool, all those help designer can finish dart, pleat in a short time.



- 工艺图库：系统里存有大量缝制符号，随时可以调出，您也可以将设计好的文件保存到图库里，随时调用。
Pic lib: System is containing many sewing symbols and patterns. They are allowed calling up at anytime for the design work. Anyone can make their own library data with any new picture.
- 比拼行走：移动旋转样片，同时给样片加剪口，实现内部图样线完美对接。
Compare patch work: Compare and rotate pattern, plus adding notch for two patterns at the same time. Make sure the sewing pieces matching perfectly.



- 系统里有大量的线型，可以满足各种不同的要求。也可根据要求自定义曲线。
Seam Stitching: Many type of threading data for choice. Able to modify the stitch parameters as well. Alao can define stitch as requirement.



照相系统 Camera Input

- 数码输入：用照相功能，样板能快速输入到软件系统
Camera Input: Pattern pieces can be captured with digital camera input function and loaded to system in a short time.

