



Richpeace®

Richpeace Vertical Inkjet Cutting Plotter

RPSP-NM-I+K-1-1300- I -WC2+K-RF-1P220



Features

1. One machine multiple functions: pattern drawing with cutting, or standalone drawing.
2. HP45 cartridges for plotting, easy replacement of the nozzle.
3. Compatible with mainstream CAD file formats in the market.
4. Servo control system makes drawing & cutting faster and more stable.
5. High quality rotary cutting knife can cut min. 60g/ m2 white paper for sample design, cost saving.
6. 3-5 times efficiency of traditional manual drawing and cutting.
7. Optional double feeding structure, for time-saving during production.

Application

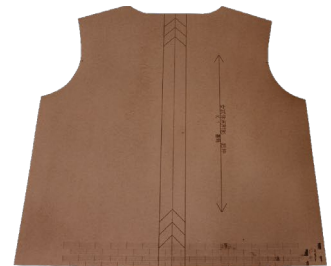
Clothing, Shoes & Caps, Bags & Luggage, Home Textile and other industries.



Automatic, Efficient and Precise



Traditional Manual Work



TIANJIN RICHPEACE AI CO., LIMITED

Add: No.6 Baozhong Road, Baodi Economic
Development Area, Tianjin City, 301800 China
Email: sales@richpeace.com www.richpeace.com

Tel: +86-22-22533456

Fax: +86-22-22530075



Machine Configuration



Inkjet Cutting Head



Double Cartridges



Tungsten Steel Cutter



Servo Motor Drive

Machine Parameters

Models	RPSP-NM-I+K-1-1300- I - WC2+K-RF-1P220	RPSP-NM-I+K-1-1600- I -WC2+K-RF-1P220	RPSP-NM-I+K-1-1800- I -WC2+K-RF-1P220
Cutting and Drawing Size	1300mm	1600mm	1800mm
Paper Width(mm)	1500mm	1800mm	2000mm
Max. Paper Load	35Kg		
Cutting Tool	Rotating Knife		
Feeding System	Automatic Feeding System		
Cartridge type	HP45		
Cartridge Number	2		
Drawing Resolution	0.025mm		
Printing Speed	72m ² /h		
Cutting Speed	≤100mm/s		
Cutting Material Thickness	60g~250g		
Drawing Material Thickness	40g~120g		
Working Temperature	0-40°C		
Data Port	USB2.0/RJ45 netport		
Motor Type	Full Servo Motor		
Data Format	HPGL/PLT , Compatible with main CAD Software In The Market		
Voltage	AC220V/110V±10% 50/60Hz		
Power	0.4KW		