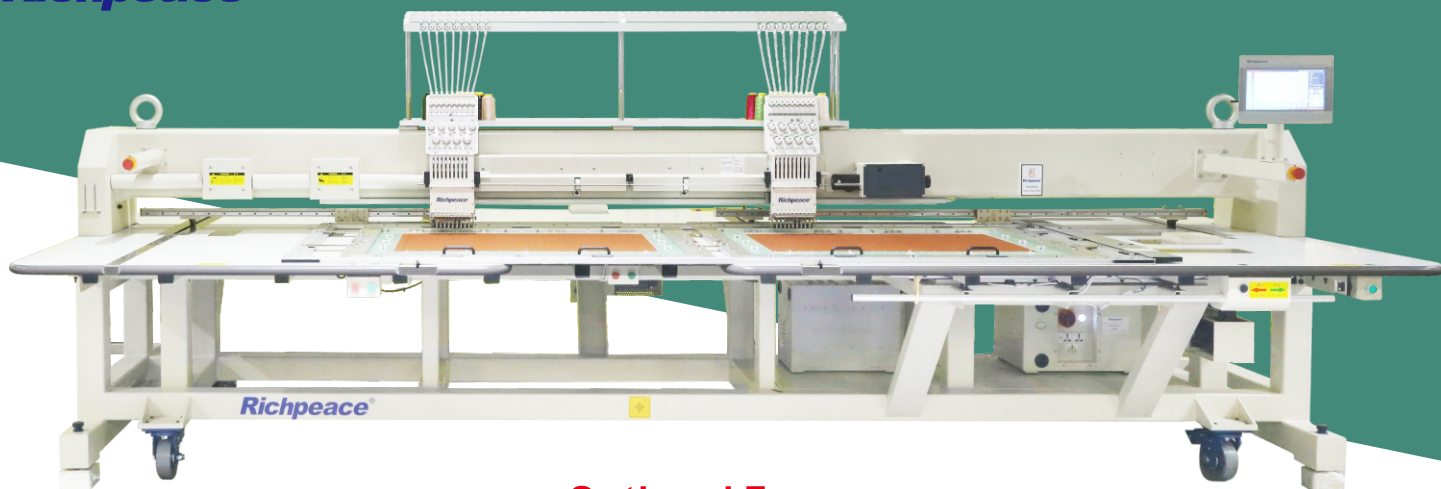




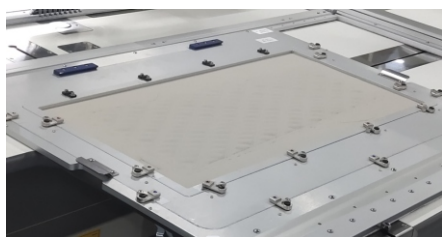
Richpeace®

Richpeace Precision Leather Embroidery Machine

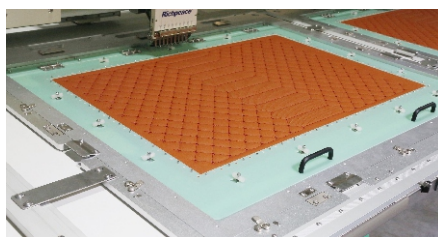
RPCE-NM-FE-2-900×600-B-F9-VR1-NA-1P220



Optional Frames



3-Layer aluminum frame



2-Layer aluminum frame+Epoxy plate



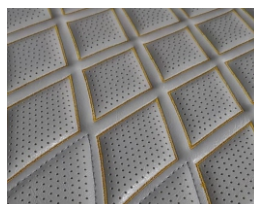
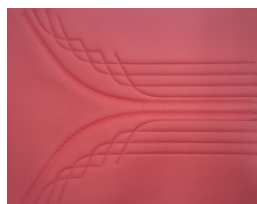
2-Layer aluminum frame + fabric clip

◆ Features ◆

- Exquisite embroidery design presents high quality products. It can share the same frame with Richpeace perforation machine and leather sewing machine to realize punching, sewing and embroidery three processes at one time, no need repositioning.
- Richpeace model III computer control system, with friendly HMI, flexible operation, and large storage, ensure machine high precision running.
- High-resolution screen, full running data displaying, convenient operation. Screen refresh rate 50 milliseconds at one time, real-time dynamic picture, display more realistic.
- New automatic thread clamping device can reduce thread-breakage rate.
- Dynamic motor thread trimming, controllable thread ends length, higher efficiency and more silent.
- Double CAM double drive and less-noise stitching mechanism, greatly reduce the noise of whole machine running.
- High-density magnetic beads reduces the friction of thread; Take-up level spring keeps enough thread tension and make it easier to adjust.
- Color-changing with lead screw, speed is as fast as 1.2 seconds / 9 needles, high-precise position.
- Lubricatable rotary hook spindle, double bearing structure, more reliable, no stuck any more.
- Wide type transmission linear guide rail, low noise and long life.
- Embroidery frame is made of high strength aluminum alloy, strong and durable.
- Machine table of high hardness, high strength, wear resistance, and good flatness, is one-time-molding processed by CNC machining center.
- Machine stand is made of high-quality steel with high rigidity, welded at the horizontal platform, and tempering treated to ensure it non-deformable for long time. Large gantry milling machine make it one-time milling, in order to make the mounting base surface and the overall mechanism precise and firm.
- Optional automatic atomized lubrication, automatic control of accurate oil quantity, reduce downtime and maintenance time, eliminate oil pollution embroidery.
- Optional Richpeace Intelligent Embroidery CAD system, seamless connecting with Richpeace embroidery machine.

◆ Application ◆

Suitable for automotive seats, automotive interiors and other high-quality leather, microfiber, leather precision embroidery.



◆ Recommended Models ◆

Models	Head	Color	Working area (L×W)	Machine Land Size (L×W×H)
RPCE-NM-FE-1-900×600-B-F9-VR1-NA-1P220	1	9	900mm×600mm	3271mm×1920mm×1650mm
RPCE-NM-FE-2-900×600-B-F9-VR1-NA-1P220	2	9	900mm×600mm	4471mm×1920mm×1650mm
RPCE-NM-FE-1-1200×800-B-F9-VR1-NA-1P220	1	9	1200mm×800mm	4180mm×2320mm×1650mm
RPCE-NM-FE-2-1200×800-B-F9-VR1-NA-1P220	2	9	1200mm×800mm	5631mm×2320mm×1650mm

◆ Parameters ◆

Max. Speed	1200rpm 850rpm for leather stitching	Stitches Capacity	130 million stitches
Operation Panel	15.6 inch LCD touch screen	Main Shaft Drive and Frame Drive	Full Servo motor
Thread Clamping	Automatic clamping	Color Changing	Lead screw drive
Thread Trimming	Motorized dynamic trimming	Stitch Length	0.1mm-12.7mm
Data Transfer	USB/WIFI	Power Supply	Single phase 220V

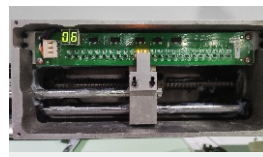
◆ Main Configuration ◆



Richpeace Model III control system



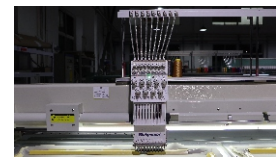
Full Servo motor



Lead screw color change



Double CAM driver



Latest thread guiding, upper thread holder

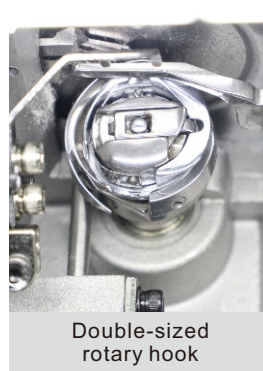
◆ Optional Devices ◆



Automatic bobbin changing device



Safety light curtain



Double-sized rotary hook



SMC atomized lubrication system



Spring shock Absorber

TIANJIN RICHPEACE AI CO., LIMITED

Add: No.6 Baozhong Road,
Baodi Economic Development Zone,
Tianjin City, 301800 China

Tel: +86-22-22533456
Email: sales@richpeace.com
Web: www.richpeace.com

